



SOLAR ENERGY INSTALLERS ASSOCIATION (SEIA) VICTORIA CONFERENCE

# MINIMUM DEMAND MANDATE VICTORIA'S EMERGENCY BACKSTOP MECHANISM FOR ROOFTOP SOLAR

15-16 MAY 2024

# WHAT WE WILL BE SHARING TODAY

1. Impacts of demand management
2. What the Government mandated changes are, including the new requirements we have for solar installers

# The way customers are using electricity is changing

Therefore, the role of the electricity grid is evolving as well



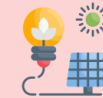
Customers and government are driving the transition to zero emissions



The electrification of transport and gas will drive additional customer demand onto our network, including during peak periods



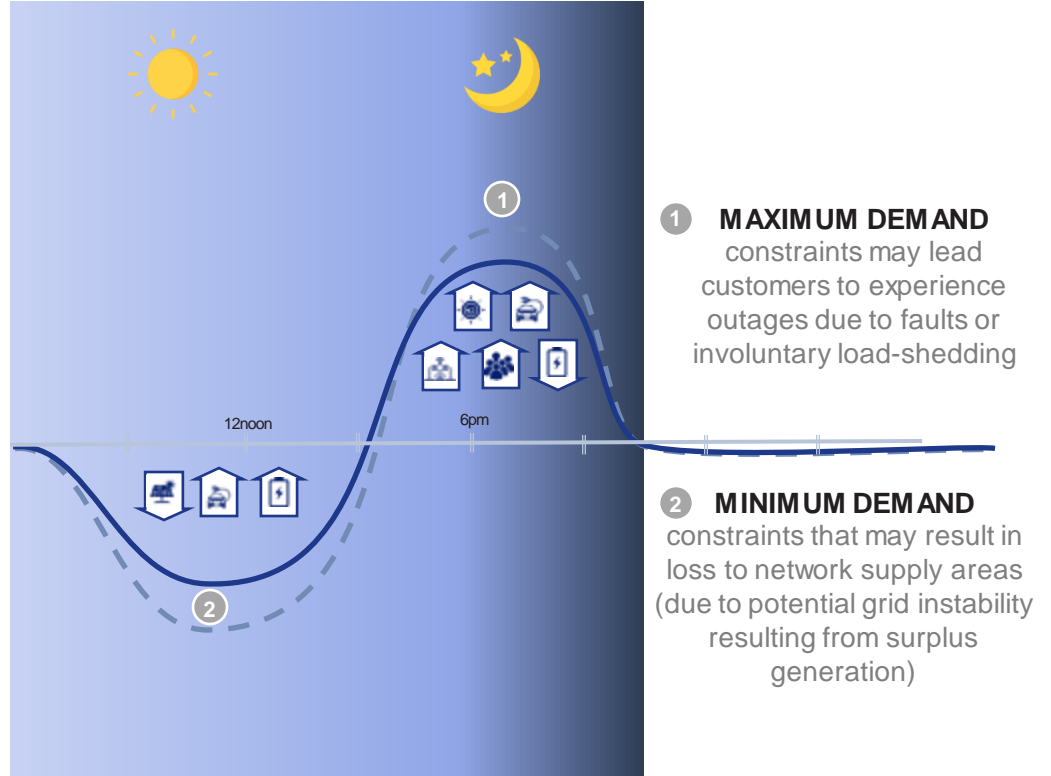
Our customers have been embracing **Consumer Energy Resources (CER)**<sup>1</sup> to achieve greater energy independence and to contribute to emissions goals



These will drive additional customer demand for export capacity on our network

1. CER refers to small-scale energy resources owned by customers, which can produce, store or vary how they use energy

# How and when customers use electricity impacts our network



# New Victorian Government mandate

## STAGE 1 (implemented October 2023)

“new and upgrading applications for embedded generation (solar) with a site capacity **greater than 200kVA** must be equipped with remote disconnection capability”

## STAGE 2

“new and upgrading applications for embedded generation (solar) with a site capacity of up to, and including, 200kVA must be equipped with remote disconnection capability”

*The Victorian Minister for Energy mandated by order of law the above to commence 1 July 2024*

## WHY





This allows Distribution Network Service Providers (DNSPs) to reduce or curtail solar PV systems from generating at time when we have surplus generation, when requested by the Australian Electricity Market Operator (AEMO).

## EXCEPTION

**Existing households and businesses with rooftop solar connections are not affected**

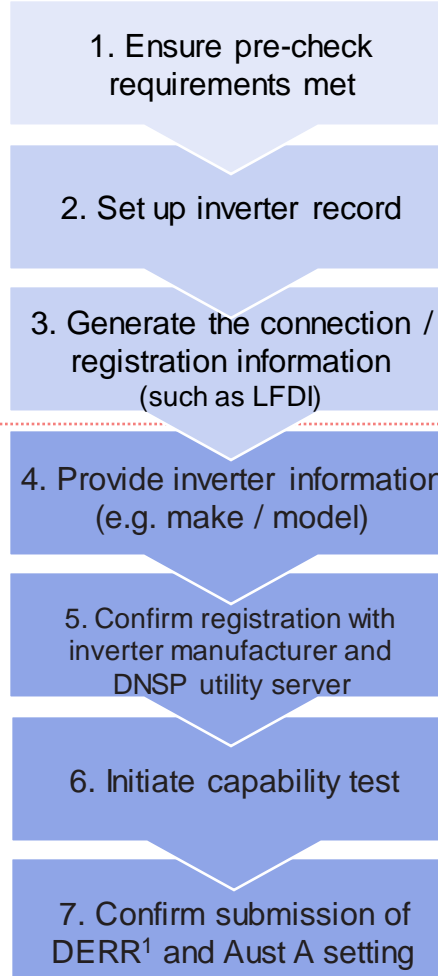
# Connection options

A reliable internet connection must be available for initial connection

SYSTEM SIZE	INTERNET AVAILABILITY	SOLUTION	CONNECTION TYPE
0 – 30kVA		CSIP-AUS	BASIC
>30 – 200kVA		CSIP-AUS	NEGOTIATED
		Generator Monitor Meter	
>200kVA – 1MVA	N/A	AusNet Generation Monitor Meter	
		 Generator Monitor Meter	
		Jemena SCADA <sup>1</sup>	
>1MVA	N/A	SCADA	

# To comply with this regulation, we must be able to communicate with and control CER devices on our network

## INSTALLER STEPS TO BE COMPLETED ON SITE AT TIME OF INSTALLATION



### CONFIGURATION CHECKLIST

- ✓ Export meter is installed
- ✓ Inverter is on the approved CEC list
- ✓ Inverter is certified with a software client
- ✓ Australian A AS-4777.2.2020 inverter settings have been applied
- ✓ Devices connected to customer's internet

1. DERR – Distributed Energy Resource Register

**The Inverter is connected to our systems, over the internet, providing us the ability to issue commands and therefore manage the amount of energy that is exported to the grid**

